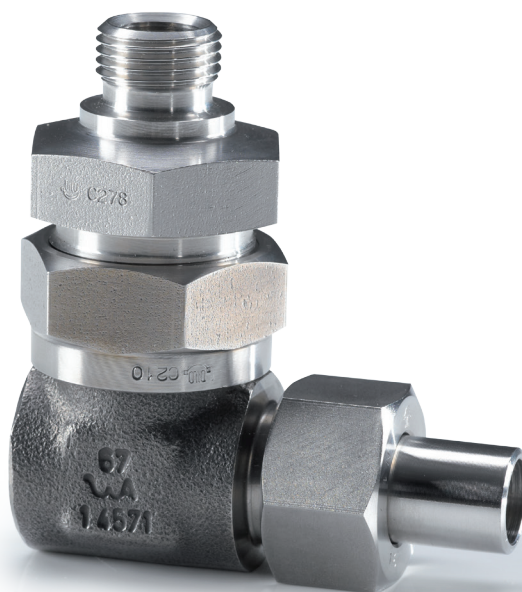
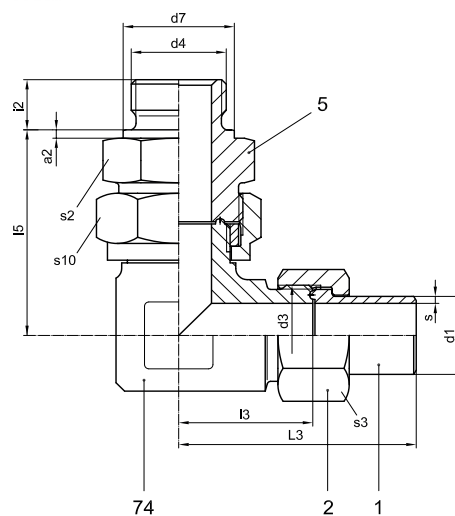


# Throttlefree angle-swivel unions with Whitworth thread



- With weld-on end (adjustable)
- Available for tube diameters from DN 3 up to DN 40
- Temperature-resistant from -270 °C up to +500 °C (dependant on the material used)
- Available in DIN EN materials: 1.0460 and 1.4571  
Other materials on request.
- Four-part union consisting of weld-on stub, clamping nut, screw-in stub and angle-swivel piece



## SD1W-G Series for pressures up to PN 100:

DN	d <sub>1</sub>	s	d <sub>3</sub>	d <sub>4</sub>	d <sub>7</sub>	L <sub>3</sub>	l <sub>3</sub>	l <sub>5</sub>	i <sub>2</sub>	a <sub>2</sub>	s <sub>2</sub>	s <sub>3</sub>	s <sub>10</sub>	Order number	Material number	
															1.0460	1.4571
4	6	1,25	M 14x1,5	G 1/8 A	14	42	21	42	8	1,5	24	17	27	SD1W 4 G		
6	8	1,5	M 16x1,5	G 1/4 A	18	50	27	44	12	2	27	19	30	SD1W 6 G		
8	10	1,5	M 18x1,5	G 1/4 A	18	52	27	47,5	12	2	27	22	32	SD1W 8 G		
10	12	1,75	M 20x1,5	G 3/8 A	22	57	30	52	12	2,5	32	24	36	SD1W 10 G		
12	15	2	M 22x1,5	G 1/2 A	26	60	31	54	14	3	32	27	36	SD1W 12 G		
16	18	2	M 26x1,5	G 1/2 A	26	64	33	61	14	3	41	32	41	SD1W 16 G		
20	22	2	M 30x1,5	G 3/4 A	32	69	35	71	16	3	46	36	46	SD1W 20 G		
25	28	2,5	M 36x2	G 1 A	39	84	47	74	18	3	46	41	50	SD1W 25 G		
32	35	2,5	M 45x2	G 1 1/4 A	49	94	54	78	20	3	55	50	60	SD1W 32 G		
40a	42	3	M 52x2	G 1 1/2 A	55	105	62	83	22	3	60	60	65	SD1W 40a G		

 Parts available from stock

### SD2W-G Series for pressures up to PN 200:

DN	d <sub>1</sub>	s	d <sub>3</sub>	d <sub>4</sub>	d <sub>7</sub>	L <sub>3</sub>	l <sub>3</sub>	l <sub>5</sub>	i <sub>2</sub>	a <sub>2</sub>	s <sub>2</sub>	s <sub>3</sub>	s <sub>10</sub>	Order number	Material number	
															1.0460	1.4571
3	6	1,5	M 14x1,5	G ¼ A	18	49	23	43	12	2	24	19	27	SD2W 3 G		
4	8	2	M 16x1,5	G ¼ A	18	53	27	43	12	2	24	22	27	SD2W 4 G		
6	10	2	M 18x1,5	G 3/8 A	22	53	27	45	12	2,5	27	22	30	SD2W 6 G		
8	12	2	M 20x1,5	G 3/8 A	22	57	29	51	12	2,5	30	24	32	SD2W 8 G		
10	13,5	1,75	M 22x1,5	G ½ A	26	63	31	55	14	3	32	27	36	SD2W 10 G		
12	16	2,5	M 24x1,5	G ½ A	26	65	33	61	14	3	36	30	41	SD2W 12 G		
16	20	2,5	M 30x1,5	G ¾ A	32	71	34	70	16	3	41	36	46	SD2W 16 G		
20	25	2,5	M 36x2	G 1 A	39	90	48	72	18	3	46	46	50	SD2W 20 G		
25	30	3	M 42x2	G 1 ¼ A	49	98	53	80	20	3	50	50	55	SD2W 25 G		
32	38	3,5	M 52x2	G 1 ½ A	55	112	61	86	22	3	60	60	65	SD2W 32 G		

### SD3W-G Series for pressures up to PN 320:

DN	d <sub>1</sub>	s	d <sub>3</sub>	d <sub>4</sub>	d <sub>7</sub>	L <sub>3</sub>	l <sub>3</sub>	l <sub>5</sub>	i <sub>2</sub>	a <sub>2</sub>	s <sub>2</sub>	s <sub>3</sub>	s <sub>10</sub>	Order number	Material number	
															1.0460	1.4571
3	6	1,5	M 14x1,5	G ¼ A	18	48	23	44	12	2	24	19	27	SD3W 3 G		
4	8	2	M 16x1,5	G ¼ A	18	52	27	44	12	2	24	22	27	SD3W 4 G		
5	10	2,5	M 18x1,5	G 3/8 A	22	52	27	49	12	2,5	27	24	30	SD3W 5 G		
6	12	3	M 20x1,5	G 3/8 A	22	59	30	50	12	2,5	27	27	30	SD3W 6 G		
8	13,5	2,75	M 22x1,5	G ½ A	26	63	32	55	14	3	30	30	36	SD3W 8 G		
10	16	3	M 24x1,5	G ½ A	26	68	33	58	14	3	32	32	36	SD3W 10 G		
12	20	4	M 30x1,5	G ¾ A	32	74	35	69	16	3	36	36	41	SD3W 12 G		
16	25	4,5	M 36x2	G 1 A	39	92	49	72	18	3	46	46	50	SD3W 16 G		
20	30	5	M 42x2	G 1 ¼ A	49	104	56	79	20	3	50	50	55	SD3W 20 G		
25a	35	5,5	M 48x2	G 1 ½ A	55	114	63	87	22	3	60	55	65	SD3W 25a G		
25	38	6	M 52x2	G 1 ½ A	55	117	63	87	22	3	60	60	65	SD3W 25 G		

For orders on individual parts we need the following information:

Pieces	Component	Designation	Order number	Material number
1	1	Weld-on stub	(M-Series)-(DN)- 1	_____
1	2	Clamping nut	(M-Series)-(DN)- 2	_____
1	5	Screw-in stub	(SD-Series)-(DN)- 5	_____
1	74	Angle-swivel piece	(SD-Series)-(DN)-74	_____

Materials: see „Material standards“ page 6

Accessories: copper seals  
see page 66

