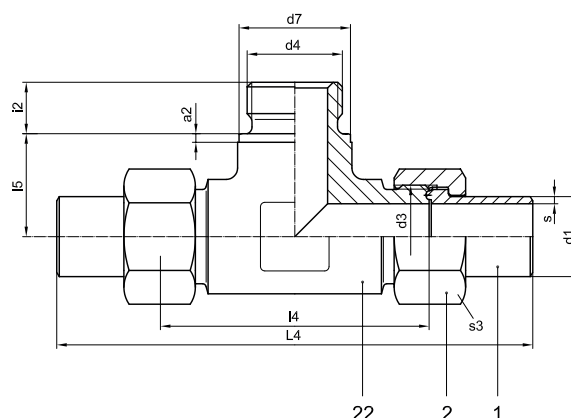


# Tee screw-in unions

with Whitworth thread



- With two weld-on ends and one screw-in thread
- Available for tube diameters from DN 3 up to DN 50
- Temperature-resistant from -270 °C up to +500 °C (dependant on the material used)
- Available in DIN EN materials: 1.0460 and 1.4571  
Other materials on request.
- Five-part union consisting of 2 weld-on stubs, 2 clamping nuts and 1 screw-in Tee piece



## M1BT-G Series for pressures up to PN 100:

DN	d <sub>1</sub>	s	d <sub>3</sub>	d <sub>4</sub>	d <sub>7</sub>	L <sub>4</sub>	L <sub>4</sub>	L <sub>5</sub>	i <sub>2</sub>	a <sub>2</sub>	s <sub>3</sub>	Order number	Material number	
													1.0460	1.4571
4	6	1,25	M 14x1,5	G 1/8 A	14	83	42	16	8	1,5	17	M1BT 4 G		
6	8	1,5	M 16x1,5	G 1/4 A	18	99	54	18	12	2	19	M1BT 6 G		
8	10	1,5	M 18x1,5	G 1/4 A	18	103	54	18	12	2	22	M1BT 8 G		
10	12	1,75	M 20x1,5	G 3/8 A	22	113	60	19	12	2,5	24	M1BT 10 G		
12	15	2	M 22x1,5	G 1/2 A	26	119	62	20	14	3	27	M1BT 12 G		
16	18	2	M 26x1,5	G 1/2 A	26	127	66	23	14	3	32	M1BT 16 G		
20	22	2	M 30x1,5	G 3/4 A	32	135	69	28	16	3	36	M1BT 20 G		
25	28	2,5	M 36x2	G 1 A	39	167	94	36	18	3	41	M1BT 25 G		
32	35	2,5	M 45x2	G 1 1/4 A	49	187	108	34	20	3	50	M1BT 32 G		
40a	42	3	M 52x2	G 1 1/2 A	55	209	124	40	22	3	60	M1BT 40a G		
40	44	3	M 56x2	G 1 1/2 A	55	221	136	46	22	3	65	M1BT 40 G		
50	57	4	M 68x2	G 2 A	68	255	160	56	24	3,5	75	M1BT 50 G		

### M2BT-G Series for pressures up to PN 200:

DN	d <sub>1</sub>	s	d <sub>3</sub>	d <sub>4</sub>	d <sub>7</sub>	L <sub>4</sub>	l <sub>4</sub>	l <sub>5</sub>	i <sub>2</sub>	a <sub>2</sub>	s <sub>3</sub>	Order number	Material number	
													1.0460	1.4571
3	6	1,5	M 14x1,5	G ¼ A	18	96	46	13	12	2	19	M2BT 3 G		
4	8	2	M 16x1,5	G ¼ A	18	104	54	19	12	2	22	M2BT 4 G		
6	10	2	M 18x1,5	G 3/8 A	22	104	54	19	12	2,5	22	M2BT 6 G		
8	12	2	M 20x1,5	G 3/8 A	22	112	58	21	12	2,5	24	M2BT 8 G		
10	13,5	1,75	M 22x1,5	G ½ A	26	124	62	21	14	3	27	M2BT 10 G		
12	16	2,5	M 24x1,5	G ½ A	26	128	66	25	14	3	30	M2BT 12 G		
16	20	2,5	M 30x2	G ¾ A	32	140	68	29	16	3	36	M2BT 16 G		
20	25	2,5	M 36x2	G 1 A	39	178	96	36	18	3	46	M2BT 20 G		
25	30	3	M 42x2	G 1 ¼ A	49	196	108	34	20	3	50	M2BT 25 G		
32	38	3,5	M 52x2	G 1 ½ A	55	224	124	40	22	3	60	M2BT 32 G		
40	44	4,25	M 56x2	G 1 ¾ A	62	246	136	44	24	3,5	65	M2BT 40 G		
50	57	6	M 68x2	G 2 A	68	280	160	56	24	3,5	80	M2BT 50 G		

### M3BT-G Series for pressures up to PN 320:

DN	d <sub>1</sub>	s	d <sub>3</sub>	d <sub>4</sub>	d <sub>7</sub>	L <sub>4</sub>	l <sub>4</sub>	l <sub>5</sub>	i <sub>2</sub>	a <sub>2</sub>	s <sub>3</sub>	Order number	Material number	
													1.0460	1.4571
3	6	1,5	M 14x1,5	G ¼ A	18	96	46	14	12	2	19	M3BT 3 G		
4	8	2	M 16x1,5	G ¼ A	18	104	54	19	12	2	22	M3BT 4 G		
5	10	2,5	M 18x1,5	G 3/8 A	22	104	54	19	12	2,5	24	M3BT 5 G		
6	12	3	M 20x1,5	G 3/8 A	22	118	60	21	12	2,5	27	M3BT 6 G		
8	13,5	2,75	M 22x1,5	G ½ A	26	126	64	21	14	3	30	M3BT 8 G		
10	16	3	M 24x1,5	G ½ A	26	136	66	25	14	3	32	M3BT 10 G		
12	20	4	M 30x2	G ¾ A	32	148	70	29	16	3	36	M3BT 12 G		
16	25	4,5	M 36x2	G 1 A	39	184	98	36	18	3	46	M3BT 16 G		
20	30	5	M 42x2	G 1 ¼ A	49	208	112	34	20	3	50	M3BT 20 G		
25a	35	5,5	M 48x2	G 1 ½ A	55	224	122	37	22	3	55	M3BT 25a G		
25	38	6	M 52x2	G 1 ½ A	55	236	128	40	22	3	60	M3BT 25 G		
32	44	6,75	M 60x2	G 1 ¾ A	62	268	146	47	24	3,5	70	M3BT 32 G		

For orders on individual parts we need the following information:

Pieces	Component	Designation	Order number	Material number
2	1	Weld-on stub	(Series)-(DN)- 1	_____
2	2	Clamping nut	(Series)-(DN)- 2	_____
1	22	Screw-in Tee piece	(Series)-(DN)- 22	_____

Materials: see „Material standards“ page 6

Accessories: copper seals  
see page 66

