

## DILO soldering unions



**DILO soldering unions are particularly used in factory fabrication area piping. DILO offers a very wide variety of unions. Soldering unions are available either with soldering connections on both ends where the highest vibration resistance is required or with a soldering connection on one end and a screw in thread on the other.**

DILO soldering unions withstand pressures up to 64 bar.

Different materials are available for all applications.

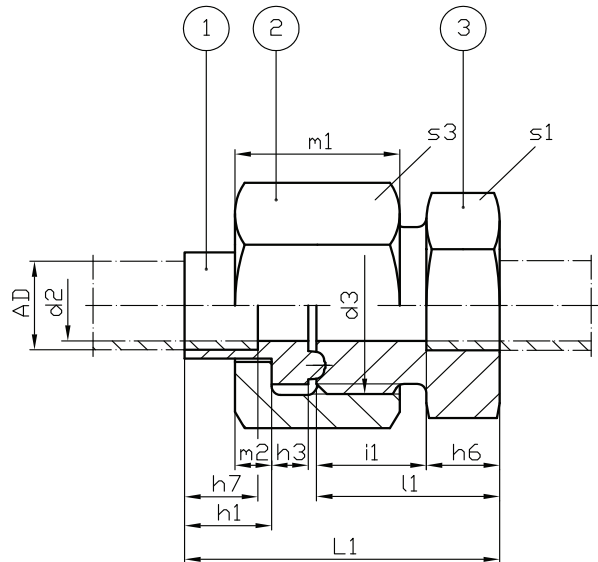
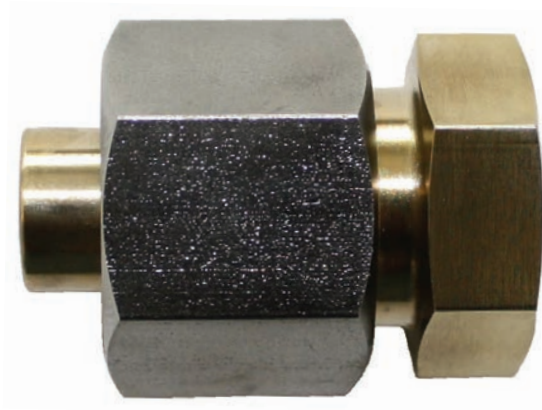
The suitable connecting parts for DILO couplings must be ordered separately.

### ■ DILO soldering unions of the ML1 series for pressures up to PN64

■ ML1A-AD	Soldering stub-soldering union PN64	86
■ ML1BO-AD	Screw-in stub-soldering union PN64 with O-ring	87
■ ML1M-AD10	Gauge union PN64 DN8	88
■ 3-328-R020	Gauge union PN64 DN8	89
■ ML1-..8	Blanking disk PN64	90
■ VST03	Plug PN64	90
■ 05-1545-R...	Tee piece	91
■ 05-1545-R...	Angle piece	91
■ 05-1545-R...	Plug-in angle piece	92

**PN64**

**Soldering stub-soldering union**



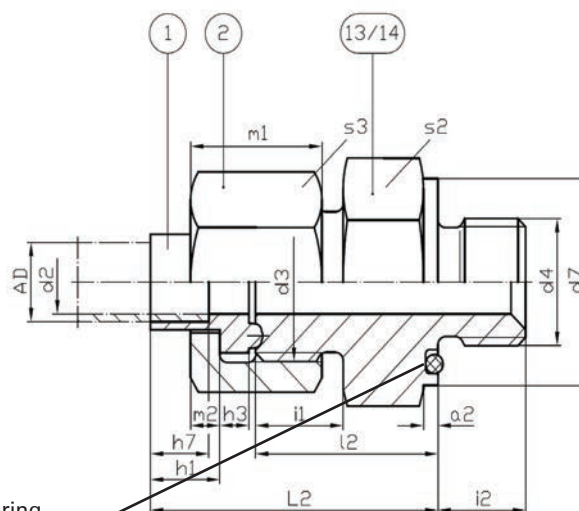
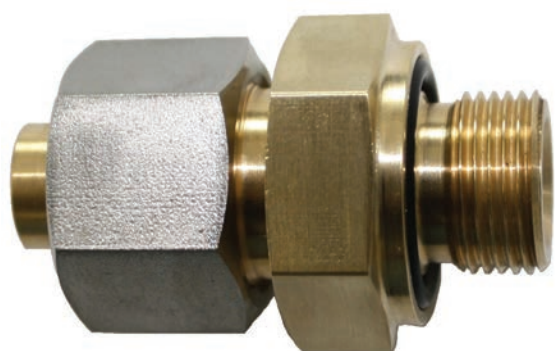
Tube outside diameter Ø AD	d2	d3	L1	l1	h1	h3	h6	h7	m1	m2	i1	s1	s3	Order No.
10	8	M20x1,5	35	20	9,5	4	8	8	18	4	12	22	24	ML1A-AD10 P
10	8	M20x1,5	35	20	9,5	4	8	8	18	4	12	22	24	ML1A-AD10 C
15	12	M26x1,5	52	22	13,5	5	10	10	20	5	12	27	32	ML1A-AD15 P
22	19	M36x2	54	31	15,5	6	12	12	26	7	16	41	41	ML1A-AD22 P
22	19	M36x2	54	31	15,5	6	12	12	26	7	16	41	41	ML1A-AD22 C
42	35	M56x2	65	37	19,5	7	20	20	29	7	18	60	65	ML1A-AD42 P
42	35	M56x2	65	37	19,5	7	20	20	29	7	18	60	65	ML1A-AD42 C

Piece	Designation	Order No.	Material
1	Soldering shoulder-tongue part	ML1-AD_____-1	P = Brass / C = Stainless steel
2	Clamping nut	ML1-AD_____-2	P = Brass / C = Stainless steel
3	Soldering stub-groove part	ML1-AD_____-3	P = Brass / C = Stainless steel

Note: For the nominal width (outside diameter 10) the clamping nut is made of stainless steel.

PN64

# Screw-in stub-soldering union with O-ring



Spare O-ring  
 Order No. AD10: 05-0057-R016  
 AD15: 05-0057-R087  
 AD22: 05-0057-R039  
 AD42: 05-0057-R126

Tube outside diameter Ø AD	d2	d3	d4	d7	L2	i2	h1	h3	h7	m1	m2	i1	i2	a2	s2	s3	Order No.
10	8	M20x1,5	M16x1,5	26	40	25	9,5	4	8	18	4	12	12	2	27	24	ML1BO-AD10 P
10	8	M20x1,5	M16x1,5	26	40	25	9,5	4	8	18	4	12	12	2	27	24	ML1BO-AD10T
10	8	M20x1,5	G 3/8 A	26	40	25	9,5	4	8	18	4	12	12	2	27	24	ML1BO-AD10G P
10	8	M20x1,5	G 3/8 A	26	40	25	9,5	4	8	18	4	12	12	2	27	24	ML1BO-AD10GT
15	12	M26x1,5	G 1/2 A	32	47	27	13,5	5	10	20	5	12	14	3	32	32	ML1BO-AD15G P
22	19	M36x2	M33x2	49	59	36	15,5	6	12	26	7	16	18	3	50	41	ML1BO-AD22 P
22	19	M36x2	M33x2	49	59	36	15,5	6	12	26	7	16	18	3	50	41	ML1BO-AD22T
22	19	M36x2	G 1 A	49	59	36	15,5	6	12	26	7	16	18	3	50	41	ML1BO-AD22G P
22	19	M36x2	G 1 A	49	59	36	15,5	6	12	26	7	16	18	3	50	41	ML1BO-AD22GT
42	35	M56x2	G 1 1/2 A	65	69	41	19,5	7	20	29	7	18	22	3	65	65	ML1BO-AD42G P

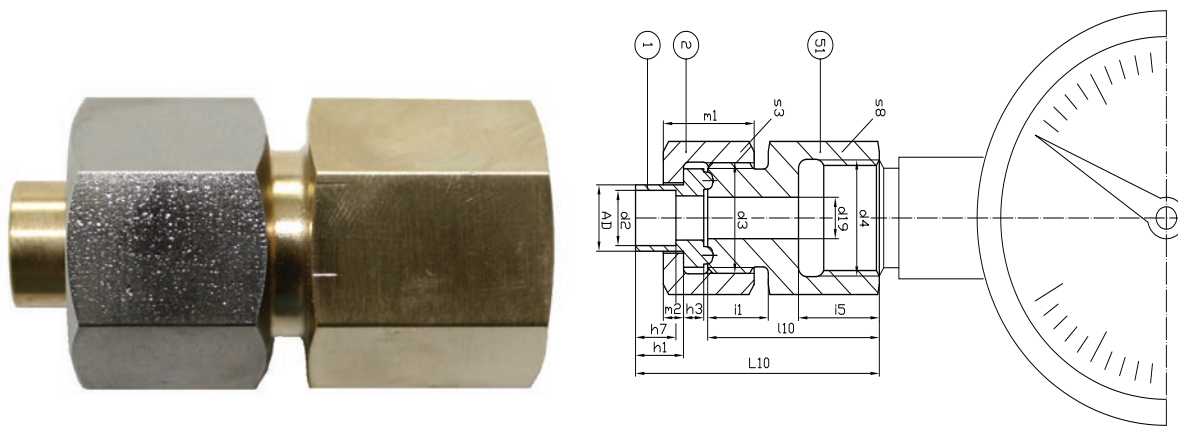
Piece	Designation	Order No.	Material
1	Soldering shoulder-tongue part	ML1-AD_____-1	P = Brass / C = Stainless steel
2	Clamping nut	ML1-AD_____-2	P = Brass / C = Stainless steel
13	Screw-in stub (M16x1,5 / M33x2)	ML1-AD_____-13	P = Brass / T = AL
14	Screw-in stub (G 3/8 A / G 1/2 A / G 1 A / G 1 1/2 A)	ML1-AD_____-14	P = Brass / T = AL

Note: For the nominal width (outside diameter 10) the clamping nut is made of stainless steel. Regarding material AL only part 13 or 14 is made of AL, part 1 and 2 are made of stainless steel.

In special version the screw-in thread can also be supplied with sealing edge according to DIN 3852-1 and DIN EN ISO 1179.

**PN64 DN8**

**Gauge union**

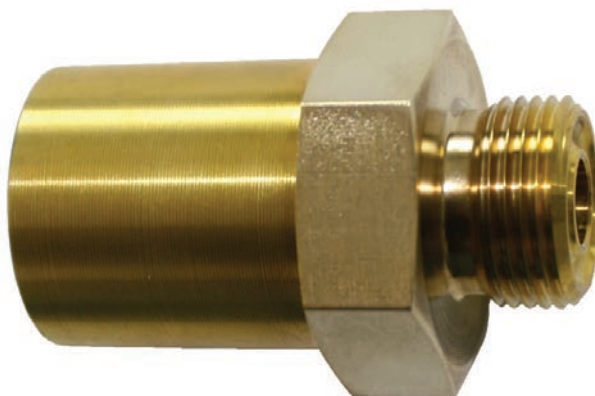


Tube outside diameter Ø AD	d2	d3	d4	d19	L10	l10	h1	h3	h7	m1	m2	i1	i5	s3	s8	Order No.
10	8	M20x1,5	G 1/2	7,5	49	34	9,5	4	8	18	4	12	16	24	24	ML1M-AD10/51
10	8	M20x1,5	G 1/4	5,5	44	29	9,5	4	8	18	4	12	13	24	22	ML1M-AD10/59

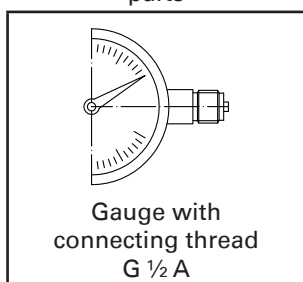
Piece	Designation	Order No.	Material
1	Soldering shoulder-tongue part	ML1-AD10-1 P	Brass
2	Clamping nut	ML1-AD10-2 C	Stainless steel
3	Gauge connecting piece	M1-10-51 P	Brass
3	Gauge connecting piece	M1-10-59 P	Brass

**PN64 DN8**  
**Gauge union**

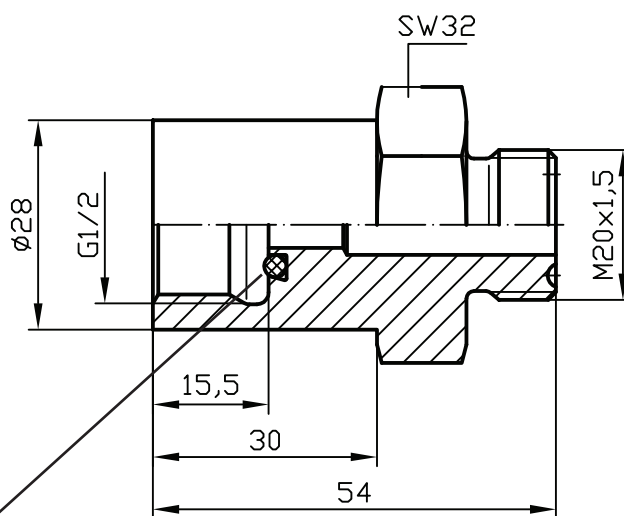
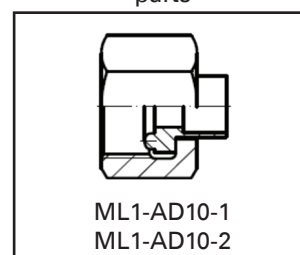
**Order No.:** 3-328-R020 P  
**Material:** Brass



Suitable connecting parts



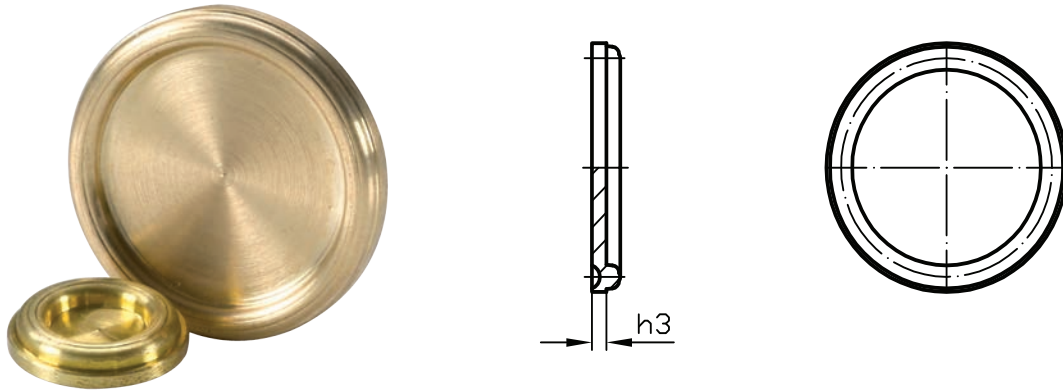
Suitable connecting parts



Spare O-ring  
 Order No. 05-0057-R225

**PN64**

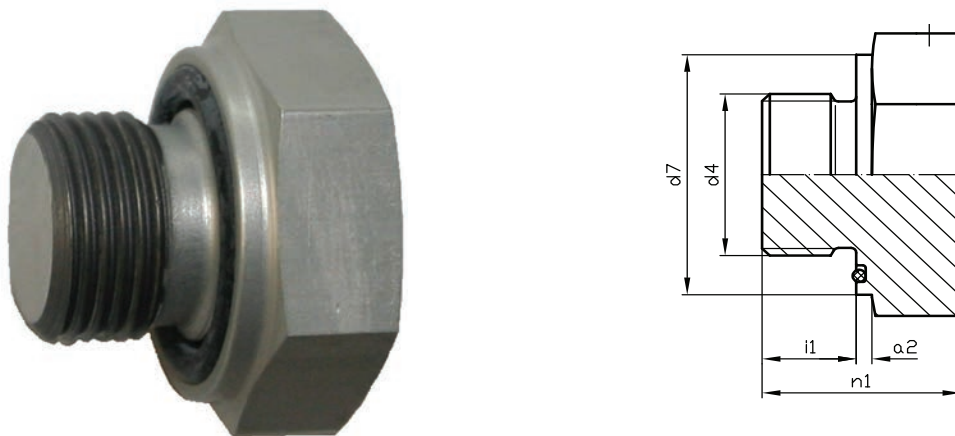
**Blanking disk**



Tube outside diameter Ø AD	h3	Order No.	Material
10	1,5	ML1-10-8 P	Brass
22	2	ML1-22-8 P	Brass
42	3	ML1-42-8 P	Brass

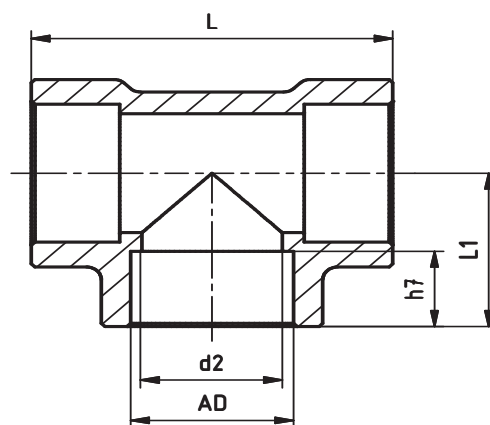
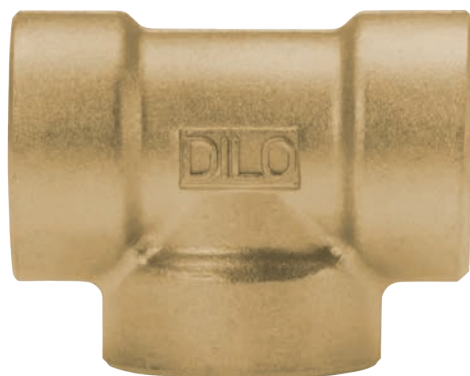
**PN64**

**Plug**



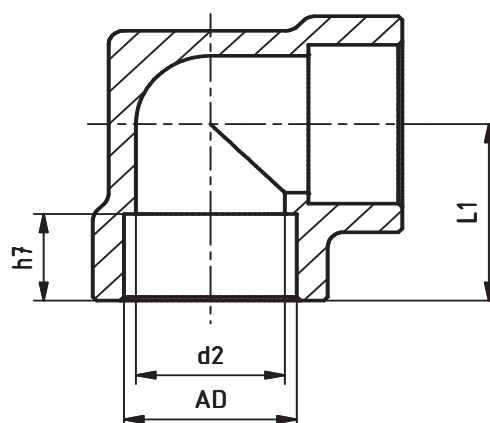
Metric fine thread ISO						Whitworth pipe thread			Spare O-ring		
d4	d7	n1	i1	a2	s2	Order No.	Material	d4	Order No.	Material	Order No.
	23	23	12	2	24			G 1/4 A	VST03 / G 1/4 AT	AL	05-0057-R088
M16x1,5	26	24	12	2	27	VST03 / M16x1,5	AL	G 3/8 A	VST03 / G 3/8 AT	AL	05-0057-R016
	36	32	15	3	36			G 1/2 A	VST03 / G 1/2 AT	AL	05-0057-R033
M33x2	49	38	18	3	50	VST03 / M33x2T	AL	G 1 A	VST03 / G 1 AT	AL	05-0057-R039
	65	45	22	3	65			G 1½ A	VST03 / G 1½ AT	AL	05-0057-R126

## Tee piece



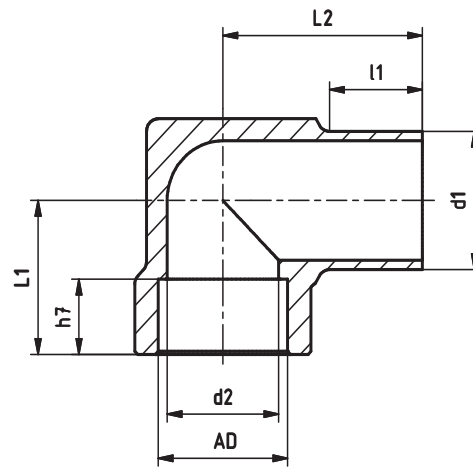
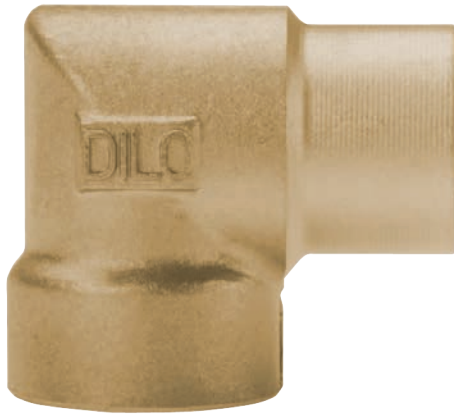
Tube outside diameter $\varnothing$ AD	PN	d2	L	L1	h7	Order No.	Material
10	64	8	29	14,5	8	05-1545-R001	Brass
15	64	12	38	19	10	05-1545-R004	Brass
22	64	19	49	24,5	12	05-1545-R002	Brass
42	25	39	90	45	20	05-1545-R003	Brass

## Angle piece



Tube outside diameter $\varnothing$ AD	PN	d2	L1	h7	Order No.	Material
10	64	8	14,5	8	05-1545-R005	Brass
15	64	12	19	10	05-1545-R008	Brass
22	64	19	24,5	12	05-1545-R006	Brass
42	25	39	45	20	05-1545-R007	Brass

## Plug-in angle piece



Tube outside diameter $\varnothing$ AD	PN	d2	L1	h7	L2	d1	l1	Order No.	Material
10	64	8	14,5	8	21,5	10	10	05-1545-R010	Brass
15	64	12	19	10	26	15	13	05-1545-R011	Brass
22	64	19	24,5	12	34	22	16	05-1545-R012	Brass
42	25	39	45	20	56,4	42	24	05-1545-R013	Brass