

# Blanking disks



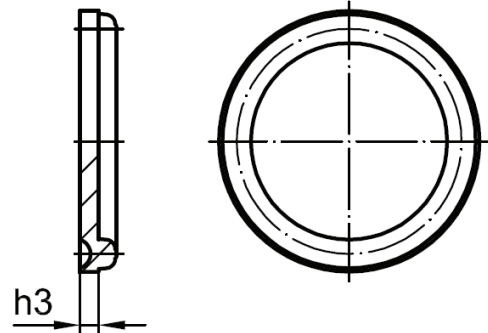
**We offer blanking disks for closing tubes suitable for any types or series and pressure ranges. On request, they are also available with throttle boring for flow regulation.**

**■ Blanking disks**

- Blanking disks 70
- Blanking disks with boring 72

# Blanking disks

- For assembly between tongue and groove part
- For all types and pressure ranges
- Range of application from -270 °C up to +500 °C dependent on the material used



## M1 Series Component 8 for pressures up to PN 100:

DN	h <sub>3</sub>	Order number	Material number	
			1.4571	1.4922
4	1,5	M1-4-8		
6	1,5	M1-6-8		
8	1,5	M1-8-8		
10	1,5	M1-10-8		
12	1,5	M1-12-8		
16	1,5	M1-16-8		
20	2,0	M1-20-8		
25	2,0	M1-25-8		
32	2,2	M1-32-8		
40a	2,8	M1-40a-8		
40	3,0	M1-40-8		
50	3,5	M1-50-8		

## J1 Series Component 8 for pressures up to PN 100:

DN	h <sub>3</sub>	Order number	Material number	
			1.4571	1.4922
4	1,5	J1-4-8		
6	1,5	J1-6-8		
8	1,5	J1-8-8		
10	2	J1-10-8		
12	2	J1-12-8		
16	2	J1-16-8		
20	2	J1-20-8		
25	2,2	J1-25-8		
32	3,5	J1-32-8		
40	3,5	J1-40-8		
50	3,5	J1-50-8		

## M2 Series Component 8 for pressures up to PN 200:

DN	h <sub>3</sub>	Order number	Material number	
			1.4571	1.4922
3	1,5	M2-3-8		
4	1,5	M2-4-8		
6	1,5	M2-6-8		
8	2	M2-8-8		
10	2	M2-10-8		
12	2	M2-12-8		
16	2	M2-16-8		
20	2,5	M2-20-8		
25	3	M2-25-8		
32	3,5	M2-32-8		
40	3,9	M2-40-8		
50	4,7	M2-50-8		

## J2 Series Component 8 for pressures up to PN 250:

DN	h <sub>3</sub>	Order number	Material number	
			1.4571	1.4922
3	1,5	J2-3-8		
4	1,5	J2-4-8		
6	1,5	J2-6-8		
8	2	J2-8-8		
10	2	J2-10-8		
12	2	J2-12-8		
16	2	J2-16-8		
20	2,5	J2-20-8		
25	3	J2-25-8		
32	3,5	J2-32-8		
40	5	J2-40-8		

**M3 Series Component 8 for pressures up to PN 320:**

DN	h <sub>3</sub>	Order number	Material number	
			1.4571	1.4922
3	1,5	M3-3-8		
4	1,5	M3-4-8		
5	2	M3-5-8		
6	2,5	M3-6-8		
8	2,5	M3-8-8		
10	3	M3-10-8		
12	3	M3-12-8		
16	3,5	M3-16-8		
20	4	M3-20-8		
25a	4,5	M3-25a-8		
25	4,5	M3-25-8		
32	5	M3-32-8		

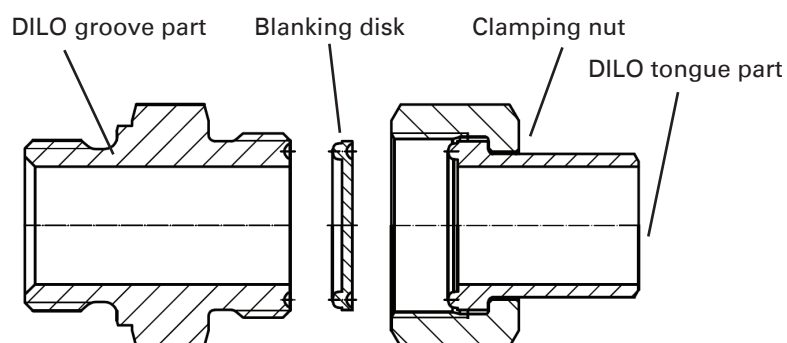
**J3 Series Component 8 for pressures up to PN 320:**

DN	h <sub>3</sub>	Order number	Material number	
			1.4571	1.4922
3	1,5	J3-3-8		
4	1,5	J3-4-8		
5	2	J3-5-8		
6	2,5	J3-6-8		
8	2,5	J3-8-8		
10	3	J3-10-8		
12	3	J3-12-8		
16	3,5	J3-16-8		
20	4	J3-20-8		
25	4,5	J3-25-8		
32	5	J3-32-8		

**Material:**

Material number acc. to DIN	Material specification	AISI material specification	DILO material code letter
1.4571	X6CrNiMoTi17-12-2	316Ti	C
1.4922	X20CrMoV11-1	---	Q

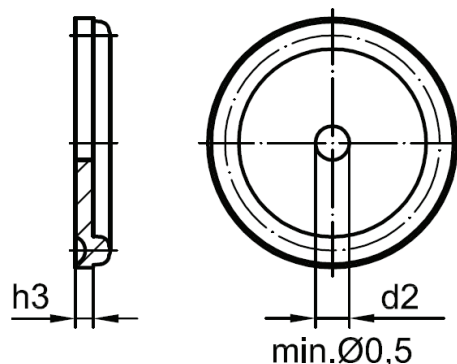
**Correct mounting of a blanking disk**



The blanking disk must be fitted in between the groove and tongue. The blanking disk is fixed by pressing the weld-on stub and the clamping nut.

## Blanking disks with boring

- For assembly between tongue and groove part
- Version with throttle boring for flow reduction
- For all types and pressure ranges
- Range of application from -270 °C up to +500 °C dependent on the material used



Please indicate the required boring diameter!

### M1 Series Component 8 for pressures up to PN 100:

DN	$h_3$	$d_2$	Order number
4	1,5	_____	M1-4-8-N1
6	1,5	_____	M1-6-8-N1
8	1,5	_____	M1-8-8-N1
10	1,5	_____	M1-10-8-N1
12	1,5	_____	M1-12-8-N1
16	1,5	_____	M1-16-8-N1
20	2,0	_____	M1-20-8-N1
25	2,0	_____	M1-25-8-N1
32	2,2	_____	M1-32-8-N1
40a	2,8	_____	M1-40a-8-N1
40	3,0	_____	M1-40-8-N1
50	3,5	_____	M1-50-8-N1

### J1 Series Component 8 for pressures up to PN 100:

DN	$h_3$	$d_2$	Order number
4	1,5	_____	J1-4-8-N1
6	1,5	_____	J1-6-8-N1
8	1,5	_____	J1-8-8-N1
10	2	_____	J1-10-8-N1
12	2	_____	J1-12-8-N1
16	2	_____	J1-16-8-N1
20	2	_____	J1-20-8-N1
25	2,2	_____	J1-25-8-N1
32	3,5	_____	J1-32-8-N1
40	3,5	_____	J1-40-8-N1
50	3,5	_____	J1-50-8-N1

### M2 Series Component 8 for pressures up to PN 200:

DN	$h_3$	$d_2$	Order number
3	1,5	_____	M2-3-8-N1
4	1,5	_____	M2-4-8-N1
6	1,5	_____	M2-6-8-N1
8	2	_____	M2-8-8-N1
10	2	_____	M2-10-8-N1
12	2	_____	M2-12-8-N1
16	2	_____	M2-16-8-N1
20	2,5	_____	M2-20-8-N1
25	3	_____	M2-25-8-N1
32	3,5	_____	M2-32-8-N1
40	3,9	_____	M2-40-8-N1
50	4,7	_____	M2-50-8-N1

### J2 Series Component 8 for pressures up to PN 250:

DN	$h_3$	$d_2$	Order number
3	1,5	_____	J2-3-8-N1
4	1,5	_____	J2-4-8-N1
6	1,5	_____	J2-6-8-N1
8	2	_____	J2-8-8-N1
10	2	_____	J2-10-8-N1
12	2	_____	J2-12-8-N1
16	2	_____	J2-16-8-N1
20	2,5	_____	J2-20-8-N1
25	3	_____	J2-25-8-N1
32	3,5	_____	J2-32-8-N1
40	5	_____	J2-40-8-N1

Please indicate the required boring diameter!

**M3 Series Component 8 for pressures up to PN 320:**

DN	h <sub>3</sub>	d <sub>2</sub>	Order number
3	1,5	_____	M3-3-8-N1
4	1,5	_____	M3-4-8-N1
5	2	_____	M3-5-8-N1
6	2,5	_____	M3-6-8-N1
8	2,5	_____	M3-8-8-N1
10	3	_____	M3-10-8-N1
12	3	_____	M3-12-8-N1
16	3,5	_____	M3-16-8-N1
20	4	_____	M3-20-8-N1
25a	4,5	_____	M3-25a-8-N1
25	4,5	_____	M3-25-8-N1
32	5	_____	M3-32-8-N1

**J3 Series Component 8 for pressures up to PN 320:**

DN	h <sub>3</sub>	d <sub>2</sub>	Order number
3	1,5	_____	J3-3-8-N1
4	1,5	_____	J3-4-8-N1
5	2	_____	J3-5-8-N1
6	2,5	_____	J3-6-8-N1
8	2,5	_____	J3-8-8-N1
10	3	_____	J3-10-8-N1
12	3	_____	J3-12-8-N1
16	3,5	_____	J3-16-8-N1
20	4	_____	J3-20-8-N1
25	4,5	_____	J3-25-8-N1
32	5	_____	J3-32-8-N1

**Material:**

Material number acc. to DIN	Material specification	AISI material specification	DILO material code letter
1.4571	X6CrNiMoTi17-12-2	316Ti	C
1.4922	X20CrMoV11-1	---	Q