



For mounting of the DILO screw-in unions we recommend using copper seals for sealing of the screw-in plug according to DIN 3852-1 and DIN EN ISO 1179 opposite the housing or the block.

Furthermore we recommend copper seals for axial sealing of gauge connecting unions.

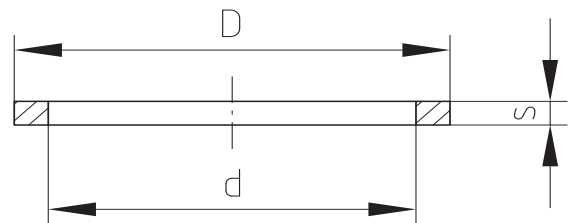
■ Copper seals

Flat seal rings

according to DIN 7603 form A



- For Whitworth G 1/8 A to G 2 A pipe thread diameters
- Suitable to seal screw in tube unions with Whitworth thread
- Material: copper
- Temperature resistant up to 300 °C



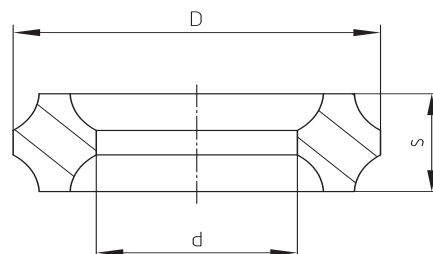
Nominal width	for thread	d	D	s	Order number
10x16	G 1/8 A	10,2	15,9	1,0	05-0568-R012
13,5x18	G 1/4 A	13,7	17,9	2,0	05-0568-R006
17x22	G 3/8 A	17,2	21,9	2,0	05-0568-R009
21x26	G 1/2 A	21,2	25,9	1,5	05-0568-R015
27x32	G 3/4 A	27,3	31,9	2,0	05-0568-R016
35x41	G 1 A	35,3	40,9	2,0	05-0568-R022
42x49	G 1 1/4 A	42,3	48,9	2,0	05-0568-R023
48x55	G 1 1/2 A	48,3	54,9	2,0	05-0568-R024
54x62	G 1 3/4 A	54,5	61,8	2,5	05-0568-R025
60x68	G 2 A	60,5	67,8	2,5	05-0568-R026

Profiled seal ring

for gauge connecting union



- For internal centering by gauge pin
- Material: copper
- Temperature resistant up to 300 °C



Thread type

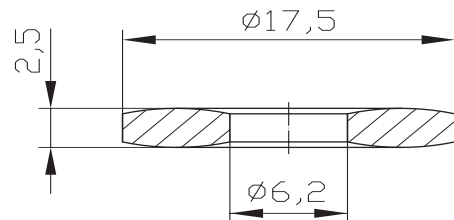
Pipe thread	Metric thread	d	D	s	Order number
G 1/8	---	4	8	2,7	05-0078-R001
G 1/4	M 12x1,5	5,4	9,3	3,2	05-0078-R002
G 1/2	M 20x1,5	8	15,2	4,2	05-0078-R003

Convex seal rings

for gauge connecting union according to DIN 7603 form D



- To seal gauge connecting unions with thread G 1/2
- Material: copper
- Temperature resistant up to 300 °C



Order number: 05-0091-R001