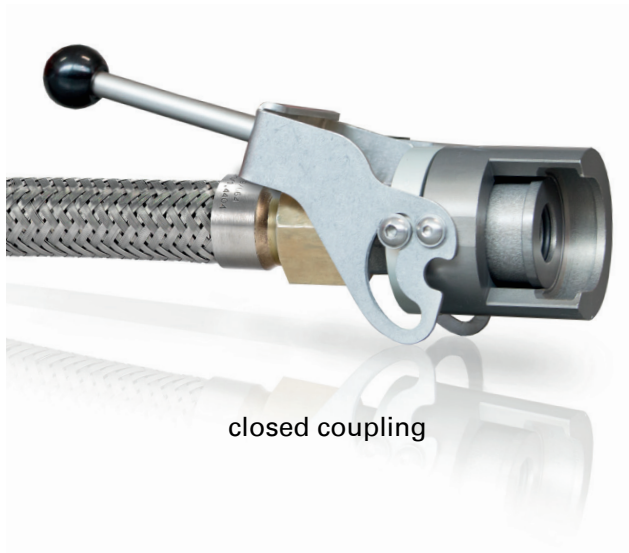
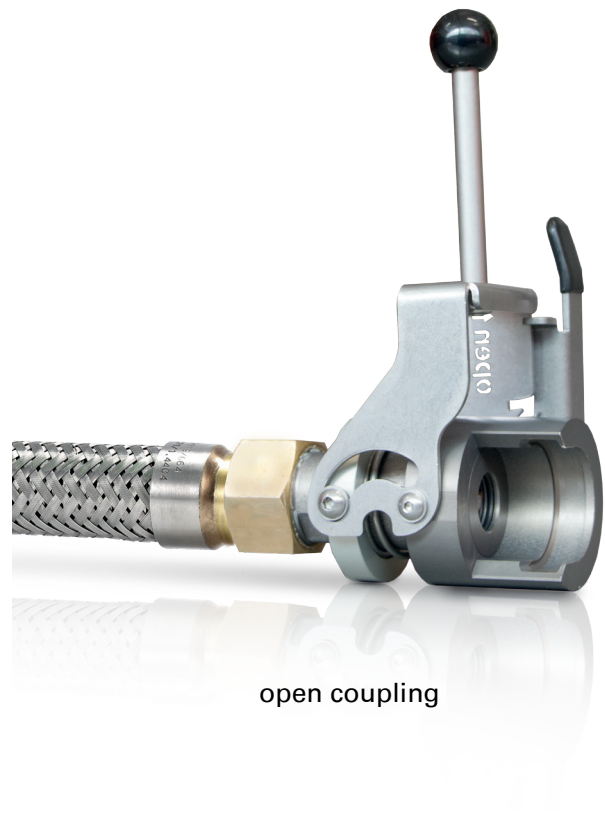


3-1121-R003**DN20 Quick coupling****For easy coupling and uncoupling of hoses**

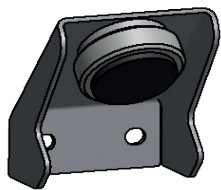
The quick coupling is very useful in all fields of application where hoses have to be frequently loosened and reconnected e. g. during final tests of completely mounted GIS fields. Thanks to the clamp lock the DN20 hoses can easily be connected without any loss of SF₆ gas. Thus the handling times in GIS production are shortened and productivity is increased considerably.



closed coupling



open coupling



Fixing facility for safe wall assembly and dust protection
Article-no. 3-1121-R093

Important note:

The quick coupling is only compatible with DILO coupling groove parts of version 2 (additional "V2" stamp on the flange or wrench size).

- Clamp lock for quick coupling and uncoupling
- Suitable for hoses DN20
- Pressure range up to 10 bar
- Robust version

Please see our product video

